



Co-financed by the European Regional Development Fund

Inspire Policy Making with Territorial Evidence

// A view from outside: Luxembourg



AVEC VOUS?

Rejoignez-nous et aidez à améliorer le bien-être de tous.

4 ATELIERS, 5 THÈMES, 1 CO-CRÉATION.

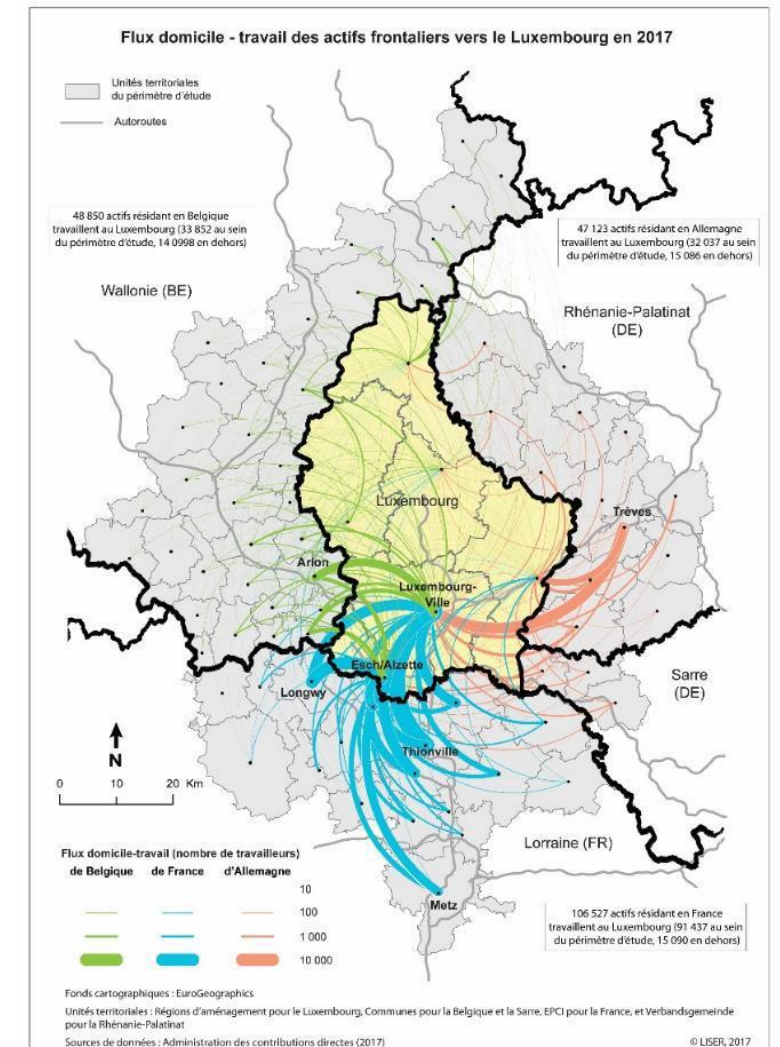
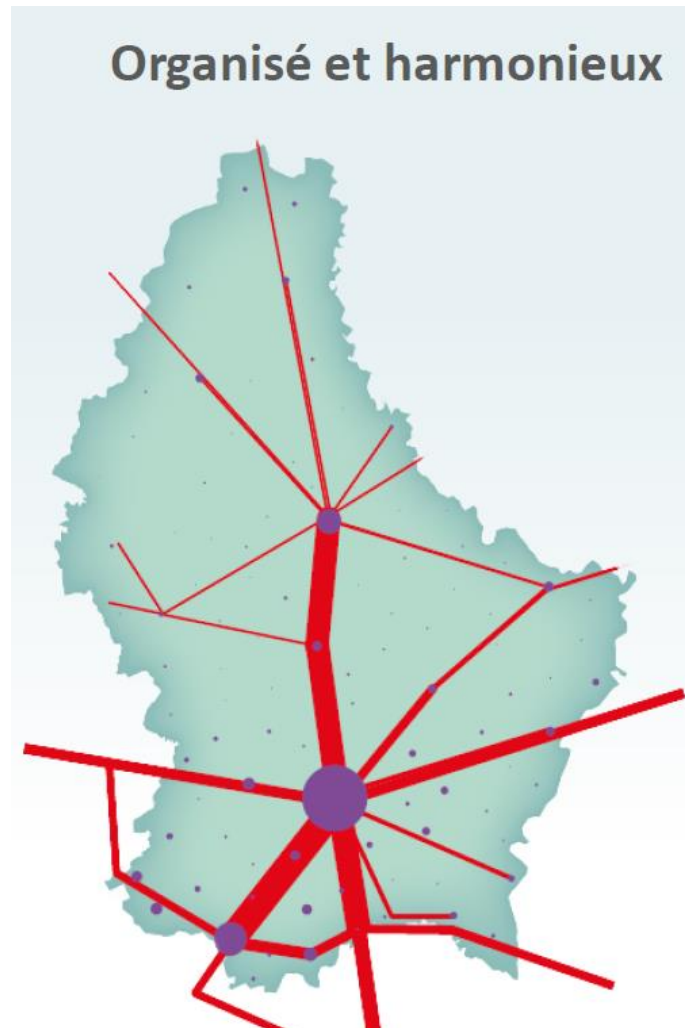
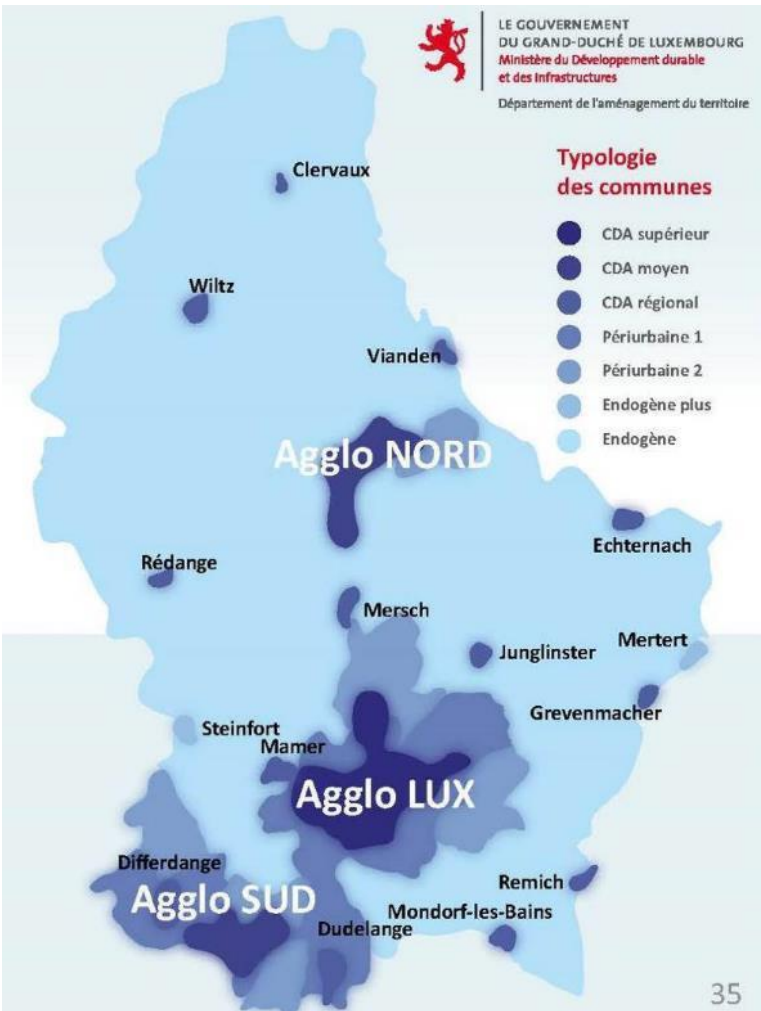
Informations et inscriptions jusqu'au 18 février 2018 sur

www.notrefuturterritoire.lu



Revision of the Master Programme for Spatial Planning

(Refonte du Programme directeur d'aménagement du territoire)



// Thank you

Frederick-Christoph Richters

Ministry of Sustainable Development and Infrastructure,

Department of Spatial Planning and Development

This presentation will be made available at: www.espon.eu/xxx